

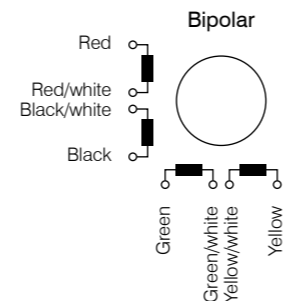
## Type ST5709 - sizes X, S, M, L, C - 0.9°



### Option



### Pin configuration



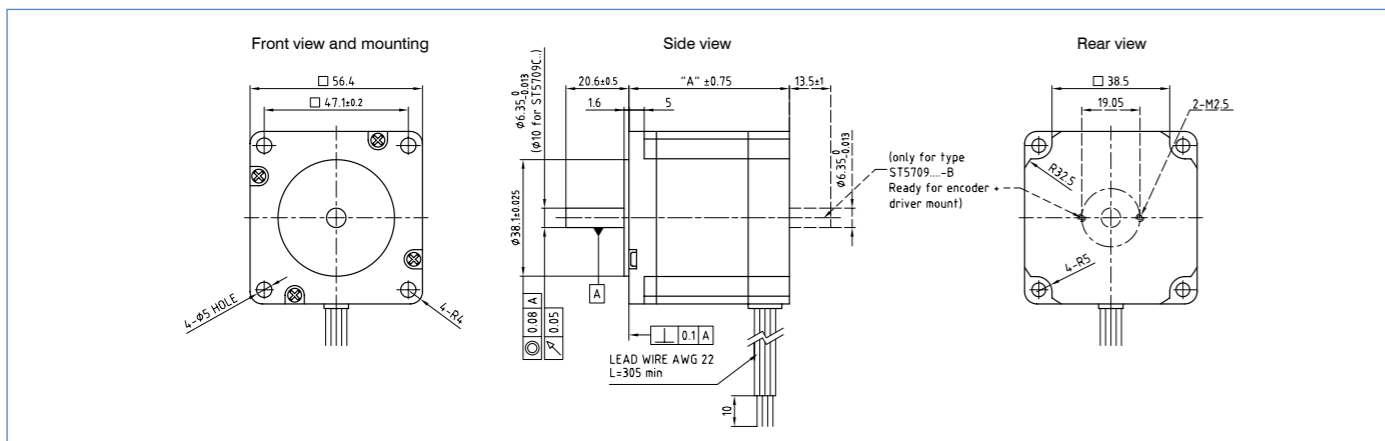
### Order number

**ST 5709 X 1108 -A**  
 A = one shaft end  
 B = two shaft ends  
 for encoder or brake

Compared with the predecessor series SH... - C, the new compact high torque stepper motor series ST5709 delivers a torque that is higher by up to 40% (output torque). As well as the increase in torque, operational characteristics with regard to vibrations, noise and microstep resolution were improved at the same time.

Also the new ST5709 high torque 0.9° stepper motor has stepped windings for the most diverse speed requirements. A controller of the SMC series enables an adjustable step angle of 0.9° to 0.09° per step, hence providing a real alternative to multiphase stepper motors.

### Outline drawing (in mm)

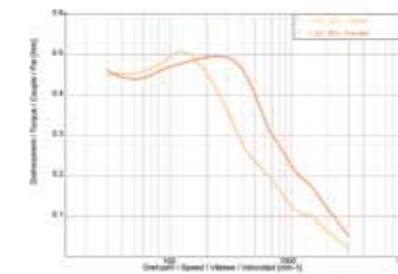


Available power sizes (others on request)							
Type	Current per winding A/winding	Holding torque Ncm	Resistance per winding Ohm/winding	Inductance per winding mH/winding	Rotor inertia torque g cm <sup>2</sup>	Weight kg	Length "A" mm
ST5709X1108	1.1	43	4.00	5.0	120	0.45	43.5
ST5709X2508	2.5	43	0.85	1.0	120	0.45	43.5
ST5709S1208	1.2	75	5.00	11.6	275	0.65	52.5
ST5709S2608	2.6	75	1.30	1.8	275	0.65	52.5
ST5709M1208	1.2	85	5.00	12.3	300	0.7	55.0
ST5709M2608	2.6	85	1.12	2.6	300	0.7	55.0
ST5709L1108	1.1	135	7.20	16.0	480	1.0	77.5
ST5709L4008	4.0	135	0.50	1.0	480	1.0	77.5
ST5709C3008	3.0	160	1.70	5.3	720	1.5	103.0

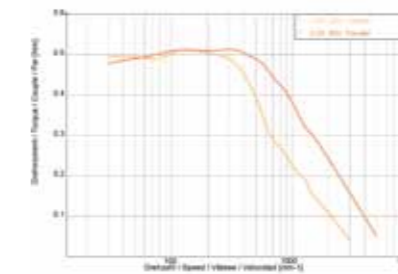
All data refer to 1 half of the winding or unipolar!

### Speed-Torque curves

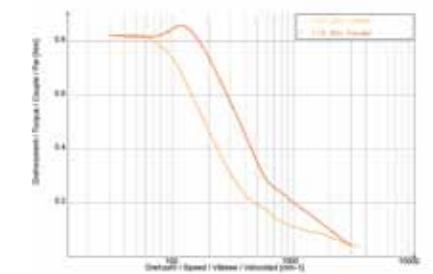
ST5709X1108



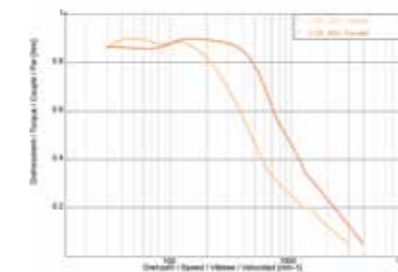
ST5709X2508



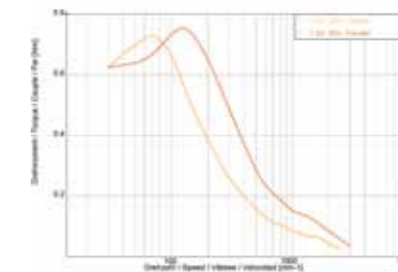
ST5709S1208



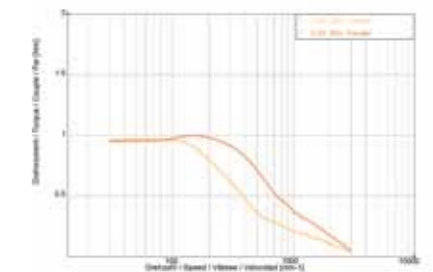
ST5709S2608



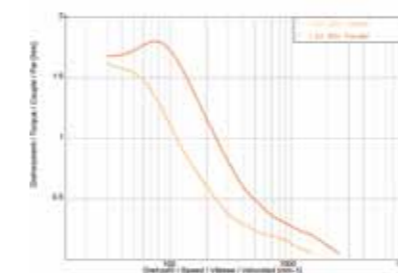
ST5709M1208



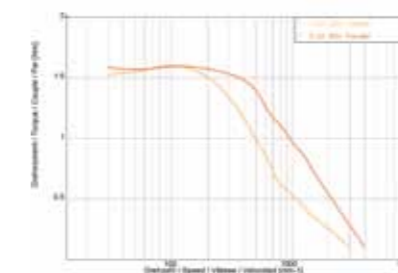
ST5709M2608



ST5709L1108



ST5709L4008



ST5709C3008

